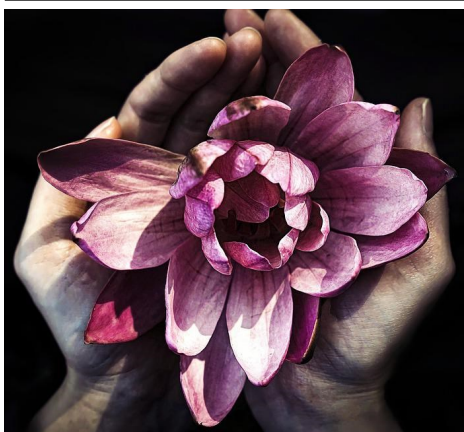


Touchstones Project Theme: The Prophetic Imperative

Prophetic Unitarian Universalist congregations share three central characteristics. First, they draw from the deepest parts of Unitarian Universalist theology, committing themselves to the wisdom of those theologies. Our work to co-create the holy in this world is most effective when it builds on perspectives gained by the



hard experience of those who came before us. ... Second, prophetic congregations embody radical caring. ... Radical caring is both prophetic and pastoral. Third, while drawing on our past and on caring in the present, prophetic congregations orient themselves squarely toward the future. Prophetic eyes see through the lens of hope ... as a spiritually disciplined response, a commitment to action. *Rev. Meg Riley*



Your gifts—whatever you discover them to be—can be used to bless or curse the world. The mind's power, the strength of the hands, the reaches of the heart, the gift of speaking, listening, imagining, seeing, waiting. Any of these can serve to feed the hungry, bind up wounds, welcome the stranger, praise what is sacred, do the work of justice or offer love. Any of these can

draw down the prison door, hoard bread, abandon the poor, obscure what is holy, comply with injustice or withhold love. You must answer this question: What will you do with your gifts? ... The choice to bless the world is more than an act of will, a moving forward ... to do good. It is ... an embrace of kindness that encompasses all life, even yours. And while there is injustice, anesthetization, or evil there moves a holy disturbance, a benevolent rage, a revolutionary love, protesting, urging, insisting that which is sacred will not be defiled. ... None of us alone can save the world. Together—that is another possibility, waiting. *Rev. Dr. Rebecca Parker*

Join us in exploring the Prophetic Imperative

Photo Credits (top to bottom)

- ◆ Flaming Chalice, photo by Touchstones
- ◆ Lotus, photo by truthseeker08 on Pixabay